

Giving you the skills to manage the demands set by the 'Omgevingswet' to work integrally.



Lewis
Deep Democracy
SHIFT EQ

ACQUIRE CRITICAL SKILLS TO WORK INTEGRALLY AND PARTICIPATIVELY:

- 1 Recognise and manage difficult behaviour
- 2 Harness diversity through creating psychological safety
- 3 Enable collaborative decisions
- 4 Deal with tension and conflict
- 5 Understand interrelationship dynamics
- 6 Know how to have challenging conversations
- 7 Improve communication
- 8 Develop critical and creative thinking

MEET THE EXPERTS



Myrna Lewis is a thought leader and practitioner in transformative leadership. Myrna and her late husband co-founded the Lewis Deep Democracy methodology. She is internationally known

and respected for making critical soft skills accessible to individuals, teams, corporates, public sector organisations, and educational institutions, enabling them to work more effectively. She is often requested to facilitate complex issues locally and internationally.



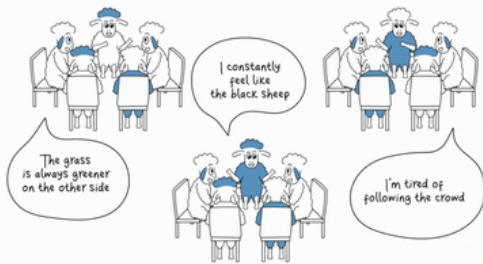
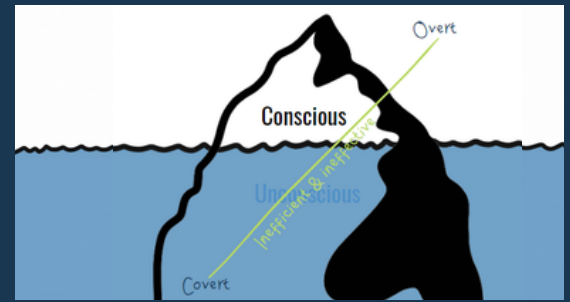
Babette te Winkel is a certified instructor in CoResolve and ShiftEQ. She leverages her experience as a manager in large corporate companies into making a social impact.

She has written a book on the purpose of the Omgevingswet, and primarily works on shaping integral and participatory work. She supports community groups, businesses, and governments to collectively tackle the challenges we are currently facing.

COURSE OVERVIEW

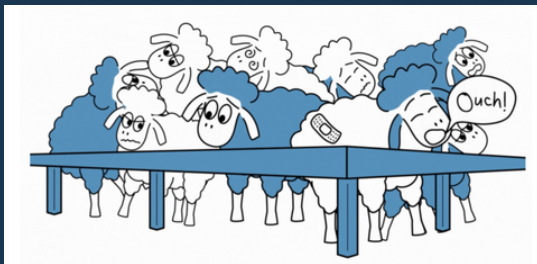
THE CONSCIOUS AND UNCONSCIOUS AND THE RESISTANCE LINE

Providing you with a new lens to understand interrelationship dynamics and difficult behaviours.



THE CHECK-IN

Create a psychologically safe and inclusive environment and build relationships.



RECOGNISE WHEN THINGS GET STUCK

Practical tools to help manage conflict, tension and strained relationships and shift unhealthy dynamics in the workplace.

THE DEBATE

A tool for surfacing different viewpoints, resolving heated discussions and overcoming issues of power and rank.



KEY STATEMENTS

Acquire easy-to-learn impact statements that help to address and deal with the elephant in the room.



UNDERSTAND INTERPERSONAL AND GROUP DYNAMICS

Discover a cutting-edge way of looking at human dynamics and change your worldview.

SHIFT^{EQ} STRUCTURE

This training alternates between theoretical sessions, participatory sessions and interactive exercises, allowing participants to directly apply the concepts in practice and gain familiarity with the tools. Upon completion, participants can also join two online peer-coaching sessions.

COST: €495 PER PERSON

DETAILS

25th June 2024

9:30-17:00 hrs

Databankweg 20, Amersfoort

Deelnemers kunnen in interactie met elkaar of met de trainers desgewenst in het Nederlands communiceren.

[CLICK HERE TO REGISTER](#)

If you have any questions, please email info@lewisdeepdemocracy.com



UNITED NATIONS



INTERNATIONAL LAW
ASSOCIATION



Australian
Human Rights
Commission



CHARLES
DARWIN
UNIVERSITY



HETI
HEALTH EDUCATION &
TRAINING INSTITUTE



Canadian Mental
Health Association



leadr



VERGENTA

PRE ERA



mac
CONSULTING



NSW
GOVERNMENT

Lankelly Chase

DREAM IT, DO IT WITH
YOUTHTOWN

freedthinkers



Western Cape
Government
Education



WITS
UNIVERSITY

WITS School of
Public Health

Gordon
Institute of
Business
Science
University
of Pretoria



FNB
First National Bank



Universität
Osnabrück



RMB



UBC
THE UNIVERSITY OF
BRITISH
COLUMBIA

Capgemini

DRA



POLITIE

pwc

